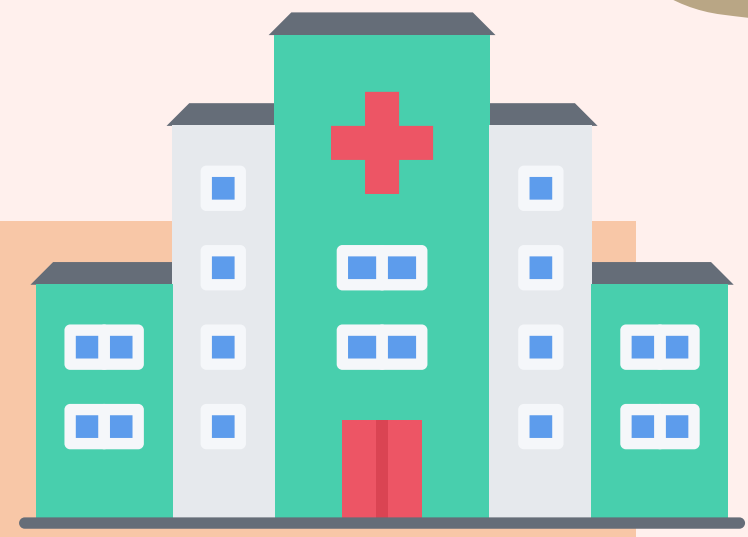


Medical Care

Urgent care clinics and hospitals in-network
with PacificSource Health Insurance



Urgent Care

American Family Care

11675 SW Pacific Hwy, Tigard, OR 97223
503.305.6262
Mon-Fri 8am-6pm Closed Sat-Sun

The Portland Clinic

9250 SW Hall Blvd., Tigard, OR 97223
503.293.0161
theportlandclinic.com
Mon-Fri 8am-8pm & Sat 9am-5pm

Legacy Good Samaritan Urgent Care

1015 NW 22nd, Portland, OR 97210
503.413.8026
Mon-Sun, 7:30 am - 11:30 pm

Zoom Care - Pearl District

202 NW 13th Ave, Portland, OR 97209
Mon-Fri 7am-midnight | Sat-Sun 9am-6pm

Zoom Care - Multnomah Village

7855 SW Capitol Hwy., Portland, OR 97219
Mon-Fri 8am-6pm / Sat-Sun 9am-6pm

Zoom Care - Sellwood/Moreland

6910 SE Milwaukie Ave. Portland, OR 97202
Mon-Fri 8am-6pm / Sat-Sun 9am-6pm

Zoom Care - Lake Oswego

111 A Avenue, Lake Oswego, OR 97034
Mon-Fri 8am-6pm / Sat-Sun 9am-6pm

www.zoomcare.com

Hospitals

Oregon Health Science University

3181 SW Sam Jackson Park Rd.,
Portland, OR 97201
503.494.8311 (General)
503.494.7551 (Emergency)

Legacy Good Samaritan Hospital

1015 NW 22nd, Portland, OR 97210
503.413.7711 (General)
503.413.7260 (Emergency)

Legacy Emanuel Hospital

2801 N Gantenbein, Portland, OR 97227
503.413.2200 (General)
503.413.4128 (Emergency)

Unity Center for Behavioral Health (Mental health emergency services)

1225 NE 2nd Ave, Portland, OR 97232
503.944.8000